

Nebraska Indian Community College

Annual Security Report

2021



402-494-2311

844-440-6422 (NICC)

<p>MACY P.O. Box 428 1111 Hwy. 75 Macy, NE 68039 Fax 402-837-4183</p>	<p>SANTEE 415 North River Rd. Niobrara, NE 68760 Fax 402-857-2543</p>	<p>PAWNEE NATION COLLEGE 891 Little Dee Drive Pawnee, OK 74058</p>	<p>SOUTH SIOUX CITY 2605 1/2 Dakota Ave. South Sioux City, NE 68776 Fax 402-494-6195</p>
----------------------------------------------------------------------------------------------	------------------------------------------------------------------------------------------	-------------------------------------------------------------------------------------------	---------------------------------------------------------------------------------------------------------------------

www.thenicc.edu

Table of Contents

Table of Contents..... 1

INTRODUCTION TO THE ANNUAL SECURITY REPORT 2

 HISTORY AND GEOGRAPHY OF THE COLLEGE 2

 MISSION 5

 VISION 5

 CORE BELIEFS AND VALUES..... 6

 WHAT IS THE CLERY ACT 8

AUTHORITY AND JURISDICTION..... 8

 CAMPUS SAFETY SERVICES 8

 CRIME/EMERGENCY REPORTING..... 9

 DRUG-FREE COLLEGE COMMUNITY 9

 COLLEGE SANCTIONS..... 10

 POSSIBLE DRUG PENALTIES UNDER TRIBAL, STATE AND FEDERAL LAW* 10

VIOLENCE PREVENTION..... 14

 VIOLENCE-FREE INSTITUTION 14

 RIOTS AND CIVIL DISTURBANCES 14

 ACTIVE SHOOTER PROCEDURE 15

 CRIME PREVENTION..... 16

 SEXUAL AND GENDER HARRASMENT 16

 DATING, DOMESTIC, SEXUAL ASSAULT AND STALKING. 16

 DISCIPLINE 16

 DISCRIMINATION..... 19

 DEFINITIONS..... 19

PROCEDURES AND POLICIES OF NICC 21

 STUDENT RIGHTS 22

 STUDENT RESPONSIBILITIES..... 22

 STUDENT CODE OF CONDUCT 23

 INCIDENTS REPORT 23

 GRIEVANCES..... 23

 GRIEVANCE PROCEDURE 23

CAMPUS CRIME SURVEYS..... 24

INTRODUCTION TO THE ANNUAL SECURITY REPORT

HISTORY AND GEOGRAPHY OF THE COLLEGE

The Nebraska Indian Community College was founded in 1973 as the American Indian Satellite Community College under a grant from the Fund for the Improvement of Post-Secondary Education. The grant was administered through Northeast Technical Community College in Norfolk, Nebraska, to provide post-secondary education on the Omaha, Santee Dakota, and the Winnebago reservations.

The American Indian Satellite Community College established classrooms and administrative offices in communities on each reservation, with the central office located in Winnebago. In 1979, the schools of the American Indian Higher Education Consortium, of which the Nebraska Indian Community College is a member, succeeded in persuading Congress to pass and fund Public Law 95-471, the Tribally Controlled Community College Act. Nebraska Indian Community College and other tribally controlled community colleges thus became eligible for direct funding from the federal government. With this newly available financial resource, the institution established itself as a fully independent two-year college. NICC was granted a charter by the governments of each of the Nebraska Indian tribes.

In serving its clientele, Nebraska Indian Community College has had a substantial impact by making a variety of cultural, educational, and social resources available in isolated and economically underdeveloped areas. The college libraries at each campus are developing collections of resources important to the history and culture of each tribe, and the nation.

In June of 1981, the North Central Association of Colleges and Schools (NCA) approved the college for initial accreditation at the associate degree granting level. The institution was granted a charter by each of the three Nebraska Indian Tribes. A Board of Trustees comprised of three members from each tribe was appointed by the individual Tribal Councils to govern the college. To reflect its independent status, the Board renamed the institution the Nebraska Indian Community College. In 1986, initial accreditation was granted. In 1994, NICC was designated by federal legislation as a land grant institution. The NCA dissolved in 2014, and accreditation then transferred under the Higher Learning Commission (HLC) under which accreditation remains.

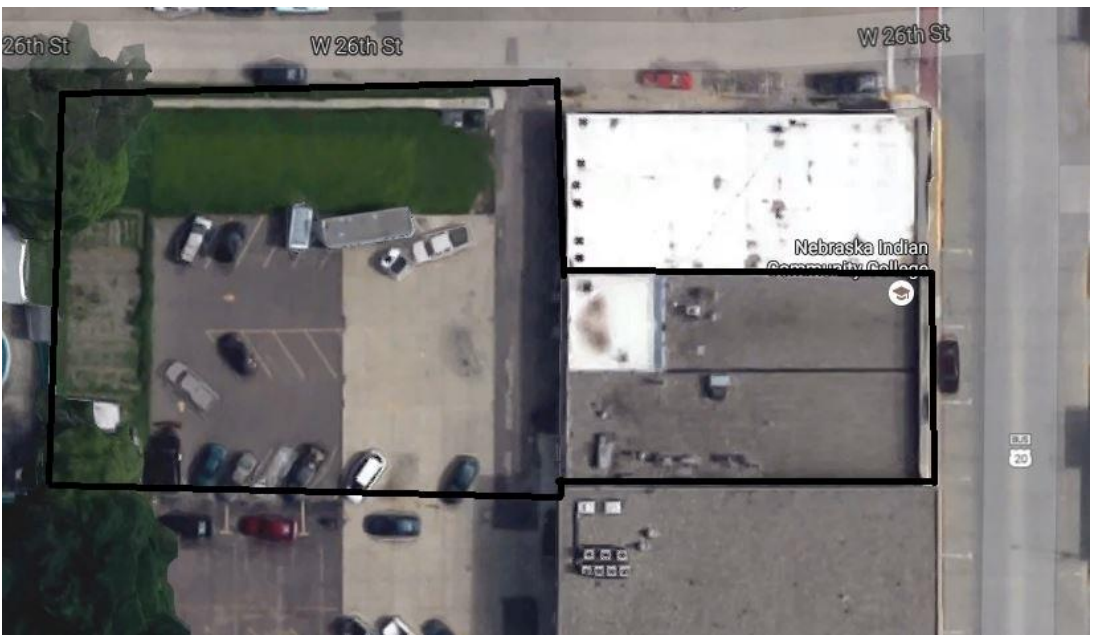
Today, NICC serves the Omaha Tribe of Nebraska, at the Macy Campus, and the Santee Dakota Nation, at the Santee Campus, and maintains a campus site in downtown South Sioux City, Nebraska. In 2020, NICC also began collaborating with Pawnee Nation College in Pawnee, Oklahoma while they work towards their own accreditation.



Macy Campus Geography



Santee Campus Geography



South Sioux City Campus Geography



Pawnee Nation College Geography- The gray box is owned by Pawnee Nation and not part of the college.

MISSION

The Nebraska Indian Community College provides quality higher education and lifelong educational opportunities for Umo^oho^o (Omaha), Isanti (Santee Dakota), and all learners.

VISION

Nebraska Indian Community College is envisioned as a comprehensive Tribal College which values service through high quality education. The college is distinctive in serving the diverse people of the Umo^oho^o (Omaha) and Isanti (Santee Dakota) Nations. It features an enriched living and learning environment and year-round operation. The identity of the college is framed by a substantive commitment to multicultural learning.

Institutional programs value and cultivate the creative and productive talents of learners, faculty, and staff, and seek ways to contribute to the self-sufficiency of the Nations served, the well-being of our communities, and the quality of life and development of its learners, faculty, and service areas.

The overall goals of NICC:

- Prepare individuals for their roles as effective tribal members and citizens in a changing and complex environment.
- Integrate, revitalize and preserve Umo^oho^o and Isanti culture throughout the college environment, including but not limited to: history, Umo^oho^o language, Dakota language, games, songs, arts/crafts and the way of life.
- Expose students to and expand the mission driven curriculum in the arts, humanities, communication, sciences, mathematics, social sciences, and Native American studies.

- Build skills for lifelong learning.
- Provide an enhanced, sustainable, positive learning environment.
- Organize, manage, and finance higher education for NICC as a model Tribal College.
- Integrate learning in ways that cultivate an individual's understanding and ability to think about large and complex subjects, formulate and analyze valid concepts, solve problems, and clarify values.

CORE BELIEFS AND VALUES

The College is committed to the following Core Beliefs:

- We believe in empowering our students with tools for Tribal Nation building, so that our communities can achieve a higher level of sovereignty and self-determination.
- We believe in the cultural preservation, continuity, and revitalization consistent with the Umo^{ho} (Omaha) and Isanti (Santee Dakota) peoples' needs, including languages and Tribal knowledge.
- We believe that learning is a life-long process, and the learner-centered atmosphere is of the utmost importance.
- We believe in a safe and healthy working and learning environment that promotes free expression and the exchange of ideas, so learners will be challenged to think holistically, and be able to live responsibly and productively in a Tribal and global society.

In addition, the College is committed to the following Core Values:

Umo ^{ho} Core Value	Literal English Translation	NICC English Core Value	Literal English Translation	Dakota Core Value
o ^{wo} ghe see thay no ⁿ o ^{wó} gisithe nó ⁿ	we think about them / keep them in our mind	<i>student-centered</i>	they (the students) stand at the center of the camp circle	wó'uŋspe khuwápi čhokáta énažij
wee ⁿ kay xte wí ⁿ k ^{he} xti	telling the real truth	<i>honesty</i>	truth, sincerity	wówičakhe
ou kgee kga ⁿ ukíko ⁿ	helping each other	<i>loyalty</i>	stay with one other	wónakičizij
geo ⁿ thah bah zhe kió ⁿ tha bazhi	staying by each other / not abandoning one another			
ou shkou da ⁿ úshko ⁿ údo ⁿ	good ways	<i>generosity</i>	to place something or somebody within your heart	wačhántohnake
ou thou dom bay uthúdo ⁿ be	consideration / restraint / thoughtfulness	<i>humility</i>	to humble oneself	wo'únsic'iye
o ⁿ thay ee yay ó ⁿ the íye	speaking softly			
thah 'ay kee thah tha'é kitha	being kind to each other			
wah no ⁿ day hee day wanó ⁿ dehide	showing concern for others	<i>compassion</i>	to be compassionate	wó'uŋšida

thah 'ay wah thay	kindness / pity			
tha'é wathe				
ay kee ga ⁿ	alike	<i>equality</i>	alike, working together for same goal	iyúha ówanžina na'úŋžipi
ék'igo ⁿ				
ee hou thay	getting permission in the right way	<i>respect</i>	respectful or polite	wóyu'onihaj
fhuthe				
ghe g'thee yay zhou bah	self-respect		self-respect	fhdu'onihaj
kighthézhuba				
o ⁿ xte	honored / important	<i>honor</i>	to honor somebody by words of praise	wayu'onihan
ó ⁿ xti		<i>trust</i>		
ou thou nah zhe	to depend on somebody		trusting someone	wačhínjanpi
uthúno ⁿ zhi ⁿ				
ay thay	kin	<i>kinship</i>	family group	wótakuye
éthe				
wah zhee ⁿ skah	wise / mindful	<i>wisdom</i>	wisdom	wōksape
wazhí ⁿ ska				
Wah kgo ⁿ dah	prayerful	<i>spirituality</i>	Dakota spirituality	Dakhód wóčhekiye
wah thah ha ⁿ no ⁿ				
Wakó ⁿ da wathaho ⁿ nó ⁿ				

Note These core values have been prepared for the spring 2018 update to the College's Mission Statement and other materials and approved by official College bodies. Tribal elders Hawatay (Winona Caramony) and Theumba Ghegtha (Thióⁿba Gighé/ Joseph Harlan) authorized these translations into Umóⁿhoⁿ on Friday the 20th and Monday the 23rd of April 2018. It was decided to make the list of values Umóⁿhoⁿ-centric by putting the core values in Umóⁿhoⁿ first and including some of the most important values from the Elders' teachings. Each Umóⁿhoⁿ word is spelt in Hawatay's preferred Spalding spelling first, and then in standard modified LaFlesche spelling. Similarly, the Dakota language immersion program leader Sid Bad Moccasin III, along with two immersion learners DeWayne Wabasha and Jaylon LaPlante used the list of Umóⁿhoⁿ-centric core values provided to guide their own list of core values in Dakota. The Dakota spelling used here follows the Lakota Language Consortium (LLC) standard orthography. Kristine Sudbeck and Binah Gordon assisted with documentation.

WHAT IS THE CLERY ACT

The "Jeanne Clery Disclosure of Campus Security Policy and Campus Crime Statistics Act" was established in 1965 and was amended in 2013 to add additional reporting items as referenced in the VAWA "Violence Against Women Reauthorization Act of 2013." Nebraska Indian Community College is mandated to report the following information in compliance with this Act.

1. NICC publishes an Annual Report every year by October 1 that contains three years of campus crime statistics and certain campus security policy statements.
2. NICC discloses and reports any crime statistics as requested from the Local Law enforcement as they have been released to NICC for Umo^{ho}- Nation, Isanti Nation, South Sioux City Public Police Department, and Pawnee Nation.
3. NICC will provide "timely warning" notices of those crimes that have occurred and pose an ongoing "threat to students and employees" via campus email, NICC Facebook page, and Snow Cap.
4. On Campus postings will be made via student email in the event of an immediate threat to the health or safety of students or employees on a specific site.

Additions from VAWA Act 2013

5. NICC will report domestic violence, dating violence, and stalking, beyond crime categories in its data collection if mandated by the Clery Act.
6. NICC will notify purported victims of their rights as listed in this report.
7. NICC employees and students are expected to follow the listed personal safety procedures while on a NICC campus.

AUTHORITY AND JURISDICTION

Two of the Nebraska Indian Community College (NICC) campuses are located within the Umo^{ho}, Isanti, and Pawnee Tribal Boundaries and are policed by the Tribal law enforcement. In Nebraska, both Knox County and Thurston County Sheriffs may also be called as dispatch for 911 is designated to Macy and Santee. In Oklahoma, the Pawnee County Sheriff may also be called as dispatch for 911 at the designated location in Pawnee, OK.

NICC works diligently to maintain good communications with these departments. In addition, NICC's urban location is on Dakota Avenue in South Sioux City, Nebraska. The local authority, South Sioux City Police Department, is called as security whenever a crime or suspicion of a crime exists at this location. The institution does not employ any on-campus security or contract with any security companies. All security is handled by local authorities as listed above. NICC does not have any memorandum of understandings with the above listed authorities, but we share information if needed for investigations.

The administration, staff, and faculty of the Nebraska Indian Community College (NICC) are committed to a program of equal opportunity for education, employment, and participation in college activities without regard to race, color, sex, age, religious creed, political ideals, marital status, physical or mental handicap, national origin or ancestry.

The Nebraska Indian Community College complies with Title IX of the Education Amendments of 1972, Title VI of the Civil Rights Act of 1964, section 504 of the Rehabilitation Act of 1973, the Americans with Disabilities Act of 1990, as well as applicable federal, state, tribal, and local laws. The person charged with monitoring and coordinating Equal Opportunity and Affirmative Action matters, as well as compliance with the aforementioned laws is the Human Resources Director.

The College retains the right to follow a policy of Indian preference in employment in line with the Title VI and Title VII of the Civil Rights Act of 1964, the Title IX of the Education Amendments of 1972 and any other applicable federal, state, and tribal laws.

CAMPUS SAFETY SERVICES

NICC makes every attempt to make sure that all campuses are monitored by a college employee or volunteer that will follow reporting guidelines and the rules of the college. The college has established cameras at all locations that show

the outside and the inside of the common areas of each campus to monitor and verify any activity that is against school policy.

The campuses have overhead lighting in all parking areas. Campuses with more than one building have these same precautionary devices on each building. NICC staff check and lock all structures each night at closing time. Each campus has a Campus Coordinator with whom reports can be filed:

Santee Campus
Anthony Warrior, Director of Human Services
402-241-5943

South Sioux City Campus
Justin Kocian, Chief Information Officer
402-241-5981

Macy Campus
Dawne Price, Dean of Student Services
402-241-5908

Pawnee Nation College
918-762-3343

All Administration has been instructed to report any incidents to the President as soon as an alleged crime is reported. NICC employees completed VAWA, Clery Act, and Harassment online training through NICC, and an all-staff training was held for Active Killer training. Annually NICC makes a good-faith effort to collect crime statistics from our local law enforcement and this is documented in the form of written letters mailed to the local authorities. NICC is not required to keep a daily crime log since we do not have any on-campus housing.

CRIME/EMERGENCY REPORTING

Students, faculty, and staff are strongly encouraged to report all crimes, emergencies, and safety issues to NICC Administration immediately. In the event of an immediate danger of a person 911 should be called for local authorities. Each NICC Campus has a weather alert radio that alerts NICC campus communities of threats of tornado or storms. Administration notifies all building occupants and gives instructions for them to follow. Every campus has a storm shelter area and fire alarms. When you are reporting an emergency, you should be prepared to give your location, name, and telephone number to the operator. In the event of unsafe roads, or unsafe services i.e., water outage, NICC has an account with SNOWCAP Communications Solutions to post all school closings, as well as Facebook. NICC has posted at each campus location storm shelter information.

DRUG-FREE COLLEGE COMMUNITY

NICC is committed to providing a healthy, safe, and secure educational environment. It is policy that reasonable measures shall be taken to establish and maintain a drug-free college community as required by the Drug-Free Schools and Communities Act (Public Law 101-226) and Drug-Free Workplace Act of 1988 (Public Law 101-690) and applicable state and tribal statutes. No person - student, faculty member, staff or visitor - shall be permitted on college premises in a state of intoxication, or under the influence of illegal substances. Neither alcohol nor controlled substances may be carried, consumed, manufactured, or distributed at NICC college events, or on NICC premises.

The use of illicit drugs and the abuse of alcohol carry significant social, physical, and emotional health risks. Users may suffer damage to key body organs such as the heart, liver, kidneys, and central nervous system. Drugs can kill the user, and the use of drugs and alcohol during pregnancy may cause birth defects or death of unborn babies. Drug and alcohol abuse may cause difficulties with concentration and memory that impairs learning. Drug and alcohol abuse can be instrumental in the deterioration of family units and the breakdown of friendships and other support systems.

COLLEGE SANCTIONS

The exhibition of intoxication or drug impairment on Campus locations will result in the student being escorted out of the campus facilities. If the student does not have a ride the authorities should be called. Repeated offenses will result in expulsion from school.

Any alcohol or drug related incident that involves harassing or threatening statements that potentially endangers any student, staff, Faculty or Administrator will automatically result in the college calling the authorities and will result in expulsion from school.

Offenses that are managed internally may result in the loss of travel privileges and/or loss of Institutionally managed scholarships.

If a student under the age of 21 is involved in any of the above actions their parent or guardian will be notified. Any expulsion or termination related to alcohol abuse or drug use will result in the student or employee being required to complete a licensed treatment program and show proof prior to their review for reinstatement.

The drug penalty schedule is as follows:

POSSIBLE DRUG PENALTIES UNDER TRIBAL, STATE AND FEDERAL LAW*

(*not a comprehensive list)

Schedules-Drugs and other substances that are considered controlled substances under the Controlled Substances Act are divided into five schedules. For the most up to date and complete schedules, which are published annually see Title 21 Code of Federal Regulations (C.F.R.) §§1308.11 through 1308.15. Substances are placed in their respective schedules based on whether they have a currently accepted medical use in treatment in the United States, the relative abuse potential, and likelihood of causing dependence when abused. Some examples are listed below:

Schedule I Controlled Substances

Substances in this schedule have no currently accepted medical use in the United States, a lack of accepted safety for use under medical supervision, and a high potential for abuse. Examples of Schedule I substances are: heroin, lysergic acid diethylamide (LSD), marijuana (cannabis), peyote, methaqualone and 3,4-methylenedioxymethamphetamine (Ecstasy).

Schedule II/IIIN Controlled Substances (2/2N)

Substances in this schedule have a high potential for abuse which may lead to severe psychological or physical dependence. Examples include: hydromorphone, methadone (Dolophine®), meperidine (Demerol®), oxycodone and fentanyl. Other Schedule II narcotics include: morphine, opium, codeine and hydrocodone. Schedule II stimulants include: amphetamine (Adderall®), methamphetamine, and methylephenidate (Ritalin®).

Schedule III/IIIN Controlled Substances (3/3N)

Substances in this schedule have a potential for abuse less than substances in Schedules I or II and abuse may lead to moderate or low physical dependence or high psychological dependence. Examples include: Narcotics products including not more than 90 milligrams of codeine per dosage unit and buprenorphine, and non-narcotics such as ketamine and anabolic steroids.

Schedule IV Controlled Substances

Substances in this schedule have a low potential for abuse relative to substances in Schedule III. Examples are: alprazolam (Xanax ®), clonazepam (Klonopin®), diazepam (Valium®), lorazepam (Ativan®), and triazolam (Halcion®).

Schedule V Controlled Substances

Substances in this schedule have a low potential for abuse relative to substances listed in Schedule IV and consist primarily of preparations containing limited quantities of certain narcotics. Examples include: cough preparations containing not more than 200 milligrams of codeine per 100 milliliters or per 100 grams (Robitussin AC®, Phenergan with Codeine®), and ezogabine.

Drug Trafficking is defined as the selling, manufacturing, growing, delivering, or possessing more than a certain amount of a controlled substance. The amount of the substance that needs to be involved in order to label it a trafficking charge depends on the substance. Below are the federal penalties for certain trafficking crimes (excluding marijuana):

FEDERAL TRAFFICKING PENALTIES FOR SCHEDULES I, II, III, IV AND V (EXCEPT MARIJUANA)

The following Substances and amounts are subject to a **first offense penalty** of not less than 5 years and not more than 40 years in prison. If death or serious bodily injury, not less than 20 years or more than life imprisonment and/or a fine of not more than \$5 million if an individual and not more than \$25 million if not an individual. They are subject to **second offense penalties** of not less than 10 years and no more than life. If death or serious bodily injury then life imprisonment. A second offense may have a fine of not more than \$8 million if an individual and not more than \$50 million if not an individual.

Schedule I: Fentanyl Analogue 10-99 grams mixture, Heroin (100-999 grams mixture), LSD (1-9 grams mixture); **Schedule II:** Cocaine (500-4999 grams mixture), Cocaine Base (28-279 grams mixture), Methamphetamine 5-49 grams pure or 50-499 grams mixture), PCP (10-99 grams pure or 100-999 grams mixture); **Schedule IV:** Fentanyl (40-399 grams mixture).

The following Substances and amount are subject to a **first offense penalty** of not less than 10 years and not more than life imprisonment. If there is death or serious bodily injury, not less than 20 years or more than life imprisonment. First offense penalty is also subject to a fine of not more than \$10 million if an individual and not more than \$50 million if not an individual. A second offense is subject to a penalty of not less than 20 years and not more than life imprisonment. If death or serious bodily injury the penalty is life imprisonment. A **second offense penalty** is subject to a fine of not more than \$20 million in and individual and not more than \$75 million if not an individual. If there **are two or more prior offenses** the penalty will be life imprisonment and a fine of not more than \$20 million if an individual and not more than \$75 million if not an individual:

Schedule I: Fentanyl Analogue (100 grams or more mixture), Heroin (1 kilogram or more mixture), and LSD (10 grams or more mixture); **Schedule II:** Cocaine (5 kilograms or more mixture), Cocaine Base (280 grams or more mixture), Methamphetamine (50 grams or more pure or 500 grams or more mixture), PCP (100 grams or more pure or 1 kilogram or more mixture); **Schedule IV:** Fentanyl (400 grams or more mixture).

OTHER DRUG TRAFFICKING PENALTIES FOR SCHEDULES I, II, III, IV AND V (EXCEPT MARIJUANA)

Any amount of other Schedule I & II Substances, Any Drug Product Containing Gamma Hydroxybutyric Acid, and Flunitrazepam (Schedule IV-1 gram). First Offense: Not more than 20 years imprisonment. If death or serious bodily injury, not less than 20 years or more than life imprisonment and/or a fine not less than \$1 million for an individual and not more than \$5 million if not an individual. **Second Offense:** Not more than 30 years imprisonment. If death or serious bodily injury, life imprisonment. Second offense is also subject to a fine of no more than \$2 million if an individual or no more than \$10 million if not an individual.

Any amount of Other Schedule III Drugs. First Offense: Not more than 10 years imprisonment. If death or serious bodily injury, not more than 15 years imprisonment. A first offense may also have a fine of no more than \$500,000 if an individual and no more than \$2.5 million if not an individual. **Second Offense:** Not more than 20 years imprisonment. If death or serious injury, not more than 30 years imprisonment. Second offense is also subject to a fine of not more than \$1 million in an individual and not more than \$5 million if not an individual.

Any Amount of All Other Schedule IV Drugs (other than one gram or more of Flunitrazepam). First Offense: Not more than 5 years imprisonment and/or a fine of not more than \$250,000 if an individual and not more than \$1 million if not an individual. **Second Offense:** Not more than 10 years imprisonment and /or a fine of not more than \$500,000 if an individual nor more than \$2 million if other than an individual.

Any Amount of All Schedule V Drugs. First Offense: Note more than 1 year imprisonment and/or a fine of not more than \$100,000 if an individual and not more than \$250,000 if other than an individual. **Second Offense:** Not more than 4 years imprisonment and/or a fine of not more than \$200,000 if an individual and not more than \$500,000 if not an individual.

FEDERAL TRAFFICKING PENALTIES FOR MARIJUANA, HASHISH AND HASHISH OIL, SCHEDULE I SUBSTANCES

Marijuana (1,000 kilograms or more marijuana mixture or 1,000 or more marijuana plants). First Offense: Not less than 10 years or more than life imprisonment. If death or serious bodily injury, not less than 20 years or more than life imprisonment. First offense is also subject to a fine of not more than \$10 million if an individual nor more than \$50 million if other than an individual. **Second Offense:** Not less than 20 years nor more than life imprisonment. If death or serious bodily injury than no more than life imprisonment. Second offense is also subject to a fine of not more than \$20 million if an individual or more than \$75 million if other than an individual.

Marijuana (100 to 999 kilograms marijuana mixture or 100 to 999 marijuana plants). First Offense: Not less than 5 years or more than 40 years imprisonment. If death or serious bodily injury, not less than 20 years or more than life imprisonment. First offense is also subject to a fine of not more than \$5 million if an individual nor more than \$25 million if other than an individual. **Second Offense:** Not less than 10 year nor more than life imprisonment. If death or

serious bodily injury, not more than life imprisonment. Second offense is also subject to a fine of not more than \$8 million if an individual or more than \$50 million if other than an individual.

Marijuana (50 to 99 kilograms marijuana mixture, 50 to 99 marijuana plants), Hashish (more than 10 kilograms), and Hashish Oil (more than 1 kilogram). **First Offense:** Not more than 20 years imprisonment. If death or serious bodily injury, not less than 20 years nor more than life imprisonment. First offense is subject to a fine of no more than \$1 million if an individual and no more than \$5 million if other than an individual. **Second Offense:** Not more than 30 years imprisonment. If death or serious bodily injury no more than life imprisonment. Second offense is also subject to a fine of not more than \$2 million if an individual and not more than \$10 million if other than an individual.

Marijuana (less than 50 kilograms, 1 to 49 marijuana plants), Hashish (10 kilograms or less), and Hashish Oil (1 kilogram or less). **First Offense:** Not more than 5 years imprisonment and/ or a fine of not more than \$250,000 if an individual and not more than \$1 million if other than an individual. **Second Offense:** Not more than 10 years imprisonment and/or a fine not more than \$500,000 for an individual nor more than \$2 million if other than an individual.

Santee Tribal Code Provision

**(The Santee Dakota Nation of Nebraska has adopted the criminal laws of the State of Nebraska)
Nebraska**

(NE uses the federal schedule for classifying drugs)

Neb. Stat. 28-416. *Except as authorized by the Uniform Controlled Substances Act (21 U.S.C. Chapter 13), is shall be unlawful for any person knowingly or intentionally: (a) To manufacture, distribute, deliver, dispense, or possess with intent to manufacture, distribute, deliver, or dispense a controlled substance; or (b) to create, distribute or possess with intent to distribute a counterfeit controlled substance.*

Anybody who violates the section above with respect to a controlled substance classified in Schedule I, II or III (except for cocaine, heroin and amphetamine) is guilty of a Class II felony. The penalty for a Class II Felony is between 1 and 50 years imprisonment.

Anybody who violates the section above with respect to a controlled substance classified in Schedules IV or V is guilty of a Class IIIA felony. The penalty for a Class IIIA felony is up to 5 years imprisonment or a fine of up to \$10,000 or both.

Anybody who violates the section above with respect to cocaine or any mixture or substance containing a detectable amount of cocaine a quantity of:

- (a) 140 grams or more shall be guilty of a Class IB felony punishable from 20 year to life imprisonment.
- (b) At least 28 grams but less than 140 grams shall be guilty of a Class IC felony which is punishable between 5 to 50 years imprisonment.
- (c) At least 10 but less than 28 grams shall be guilty of a Class ID felony which is punishable between 3 to 30 years imprisonment.

Anybody who violates the section above with respect to base cocaine (crack) or any mixture or substance containing a detectable amount of base cocaine in a quantity of:

- (a) 140 grams or more shall be guilty of a Class IB felony punishable from 20 year to life imprisonment.
- (b) At least 28 grams but less than 140 grams shall be guilty of a Class IC felony which is punishable between 5 to 50 years imprisonment.
- (c) At least 10 but less than 28 grams shall be guilty of a Class ID felony which is punishable between 3 to 30 years imprisonment.

Anybody who violates the section above with respect to heroin or any mixture or substance containing a detectable amount of heroin in a quantity of:

- (a) 140 grams or more shall be guilty of a Class IB felony punishable from 20 year to life imprisonment.
- (b) At least 28 grams but less than 140 grams shall be guilty of a Class IC felony which is punishable between 5 to 50 years imprisonment.
- (c) At least 10 but less than 28 grams shall be guilty of a Class ID felony which is punishable between 3 to 30 years imprisonment.

Anybody who violates the section above with respect to amphetamine, its salts, optical isomers, and salts of its isomers or with respect to methamphetamine, its salts, optical isomers, and salts of its isomers, in a quantity of:

- (a) 140 grams or more shall be guilty of a Class IB felony punishable from 20 year to life imprisonment.

- (b) At least 28 grams but less than 140 grams shall be guilty of a Class IC felony which is punishable between 5 to 50 years imprisonment.
- (c) At least 10 but less than 28 grams shall be guilty of a Class ID felony which is punishable between 3 to 30 years imprisonment.

Marijuana

Any person knowingly or intentionally possessing marijuana weighing more than one ounce but not more than one pound shall be guilty of a Class III misdemeanor which is punishable by up to three months in jail or a fine up to \$500 or both. Any person knowingly or intentionally possessing marijuana weighing more than one pound shall be guilty of a Class IV felony punishable by up to 5 years in prison or a fine of up to \$10,000 or both.

Any person knowingly or intentionally possessing marijuana weighing one ounce or less or any substance containing a quantifiable amount of the substances, chemicals, or compounds of Schedule I shall:

- (a) For the first offense, be guilty of an infraction, receive a citation, be fined three hundred dollars, and be assigned to attend a course if the judge determines that attending such course is in the best interest of the individual defendant.
- (b) For the second offense, be guilty of a Class IV misdemeanor, receive a citation, and be fined \$400 dollars and may be imprisoned not to exceed five days.
- (c) For the third and all subsequent offenses, be guilty of a Class IIIA misdemeanor, receive a citation, be fined five hundred dollars, and be imprisoned not to exceed seven days.

**Omaha Tribal Code Provision
Possession**

SECTION 5-3-6

Unlawful Manufacture or Delivery of a Controlled Substance is a Class A offense.

Unlawful Possession of a Controlled Substance is a Class A Offense.

Class A offenses may be sentenced as follows: a term of imprisonment not to exceed one (1) year and a fine not to exceed \$5,000.

SECTION 5-4-124

Possession of Marijuana can be a Class A, B, or C offense and is dependent of the amount possessed.

Class A possession under this section is subject to a fine of not less than \$1500 or a term of imprisonment not to exceed 12 months, or both.

Class B possession under this section is subject to a fine of not less than \$500 or a term of imprisonment not to exceed 90 days, or both.

Class C possession under this section is subject to a fine of not less than \$300.

COUNSELING SERVICES

NICC offers confidential counseling resources through Morningstar Counseling (established as free services through a Memorandum of Understanding) and encourages individuals to work with a counselor.

- **Morningstar Counseling Counselors** are required to maintain near complete confidentiality; talking to them is sometimes called a “privileged communication.”
- **Morningstar Counseling Employees** may talk to a victim in confidence, and generally only report to NICC that an incident occurred without revealing any personally identifying information. Disclosures to these employees will not trigger a College investigation into an incident against the complainant’s wishes.
- **NICC Employees** are required to report all the details of an incident (including the identities of both the complainant and respondent) to the Title IX Coordinator. A report to NICC employees (called “responsible employees”) constitutes a report to NICC and places NICC on notice to take appropriate steps to address the situation.

In addition, students are referred to the list of local agencies. Referrals to community treatment agencies/centers may be made by college staff. Suggested agencies available in the area:

Rosecrance Jackson Centers (several locations in the same area) 800 5th St., Sioux City, IA. 51101 (main office) 1-800-472-9018 Substance Abuse, Mental Health	Ponca Tribe of Nebraska Behavioral Health Services http://www.poncatribene.org/Offices 125 6th St., Sioux City, IA 51101 712-258-0500 Behavioral Health
Transitional Services of Iowa http://www.transitionalservicesofiowa.org/contact_us.html 1221 Pierce St., Sioux City, IA 51105 712-255-0204 Mental Health, Behavioral Health	Winnebago Tribe Behavioral Health http://www.winnebagoohhs.com/services/behavioral_health.html 225 Bluff St., Winnebago, NE 68071 402-878-2911 Behavioral Health
Chee Woy Na Zhee Halfway House 203 Maple St., Winnebago, NE 68071 402-878-2480 Substance Abuse	Omaha Suicide Prevention Resource Center http://www.sprc.org/grantees/omaha-tribe-nebraska 312 Main St., Macy, NE 86039 402-846-5280 Mental Health
Chee Ponca Tribe Health/Wellness http://www.poncatribene.org/ 249 Spruce Ave., Niobrara, NE 68760 402-857-3341 Substance Abuse	LIMPH System of Care Indian Center www.societyofcare.org Niobrara, NE (402) 857-2508 x304 Mental Health
H. E.A.R.T. Santee Clinic Rez.sez.cl@gmail.com 110 South Visiting Eagle St. Niobrara, NE 402-857-2508	

VIOLENCE PREVENTION

VIOLENCE-FREE INSTITUTION

The Nebraska Indian Community College has zero tolerance for physical or verbal violence of any kind. Anyone causing a situation which threatens the physical or emotional well-being of any NICC student, staff, faculty, administrator, or visitor will be removed, barred, or dismissed from enrollment or employment from the campus. Any situation involving violence could also result in criminal prosecution. Local law enforcement will be summoned if the problem becomes persistent or if there appears to be an immediate threat to a person's physical or emotional well-being. Campus Crime and Security Report will be compiled and distributed annually.

RIOTS AND CIVIL DISTURBANCES

- A. Procedures:** In the event of a riot or civil disturbance remove all students and visitors from the area most immediate to the disturbance. The Person in Charge or representative will notify the following:
- a. Police at 911
 - b. The Federal Bureau of Investigation at the Sioux City Office (712) 258-1920 or at the Omaha Office (402) 493-8688
 - c. The Tribal Business Manager, if on Tribal land.
 - d. Any Member of the Tribal Council, if on Tribal land.

The Person in Charge or representative are to act in the best interest of all concerned and solve the problem at its lowest level. For the safety of all concerned the NICC employees are not to attempt to mediate.

A. Report: Only those reports specifically required will be authorized as indicated

- a. The Person in Charge will (verbally report the results of the incident to the College President.
- b. The Person in Charge will prepare a written report to the College President, the NICC Board of Director Chair, and the Tribal Councils if applicable. The report will outline the incident as follows: how the emergency was received, action taken, authorities contacted and response. Findings and decisions made conjointly between the Person in Charge and the assisting agencies should be part of this report.

ACTIVE SHOOTER PROCEDURE

Nebraska Indian Community College has three campuses, two are located in Tribal Communities, Macy, Nebraska and Santee, Nebraska, and one in an urban area, South Sioux City, Nebraska. Each Campus has a designated entry with other entry points. The following instruction is defined for each campus. In the event that an active shooter is identified on the exterior of the building. Staff should lock down the facility as quickly as possible and call 911 or Tribal Police as later identified in the event of entry of an active shooter at each facility. Many rooms at each campus are now equipped with S.A.V.E kits that have items that could be used to protect themselves.

Macy Campus:

In the event that an active shooter enters the Macy Campus, all staff should attempt to help students exit the building to the nearest exit if they have a clear pathway. Employees that are trapped should shield themselves in offices, grabbing objects to throw at the shooter or to use as a weapon to defend themselves. Items can be found in the blue logo'd buckets throughout the campus, including 2 in the office and VTC 1 and 2. This protocol follows the training from May 2018. It is better to fight or flight than to sit and be a victim. Items to throw would be staplers, hole punchers, books, objects to defend are scissors, screw drivers, forks. ALL STAFF designated at Macy Campus should have the Macy PD number saved in their cell phones 402-837-5906, and if able should call them and tell them that there is an active shooter at the campus.

Santee Campus:

In the event that an active shooter enters the Santee Campus, all staff should attempt to help students exit the building to the nearest exit if they have a clear pathway. Employees that are trapped should shield themselves in offices/classrooms, grabbing objects to throw at the shooter or to use as a weapon to defend themselves. Items can be found in the blue logo'd buckets throughout the campus, including 2 in the office and VTC 1 and 2. This protocol follows the training from May 2018. It is better to fight or flight than to sit and be a victim. Items to throw would be staplers, hole punchers, books, objects to defend are scissors, screw drivers, forks. ALL STAFF designated at Santee Campus should have the Santee PD number saved in their cell phones 402-288-4464, and if able should call them and tell them that there is an active shooter at the campus.

South Sioux City Campus:

In the event that an active shooter enters the South Sioux City Campus, all staff should attempt to help students exit the building to the nearest exit if they have a clear pathway. Employees that are trapped should shield themselves in offices/classrooms, grabbing objects to throw at the shooter or to use as a weapon to defend themselves. Items can be found in the blue logo'd buckets throughout the campus, including 2 in the office and VTC 1 and 2. This protocol follows the training from May 2018. It is better to fight or flight than to sit and be a victim. Items to throw would be staplers, hole punchers, books, objects to defend are scissors, screw drivers, forks. ALL STAFF at SSC Campus should call 911 and tell them that there is an active shooter on campus. ALL STAFF designated at Santee Campus should have the South Sioux City PD number saved in their cell phones 402-494-7512, and if able should call them and tell them that there is an active shooter at the campus.

CRIME PREVENTION

A campus community must do more than just react to crime; it must look for opportunities to deter crime. A variety of personal habits will help students, faculty, and staff to maintain safe interactions while at the college's campuses:

- keep contact numbers for emergency calls in your cell phone
- lock vehicles
- remove expensive items from view in your vehicle
- keep personal belongings with you or secured while on campus
- ask someone to walk to your car with you after dark/don't leave a student or staff person alone in the parking lot after dark.
- buddy system – work together to keep each other safe
- do not prop open building doors
- be aware of your surroundings, trust your instincts and practice common sense.
- report suspicious actions to the campus administration

SEXUAL AND GENDER HARRASMENT

NICC is pledged to maintaining a safe working and learning environment because sexual harassment can interfere with a student's academic performance and emotional and physical well-being, and that preventing and remedying sexual harassment in schools is essential to ensure nondiscriminatory, safe environments in which students can learn.

Current laws define various violent and/or non-consensual sexual acts as crimes. Additionally, Nebraska Indian Community College has a defined category of sexual misconduct for which action under this policy may be imposed. Generally speaking, NICC considers sexual intimidation or exploitation violations to be the most serious, and therefore typically imposes the most severe sanctions, including suspension or expulsion for students and termination for employees. However, NICC reserves the right to impose any level of sanction, ranging from a reprimand up to and including suspension or expulsion/termination, for any act of sexual misconduct or other gender-based offenses, including intimate partner or relationship violence, nonconsensual sexual contact, and stalking based on the facts and circumstances of the grievance.

Complaints regarding sexual and gender harassment will be directed to the Human Resource Manager and/or Academic Dean.

NICC does not have specific on-campus programming related to prevention of dating violence, domestic violence, sexual assault and stalking as defined below, however, we do cooperate with the ONCRT DV Program and DTSU.

DATING, DOMESTIC, SEXUAL ASSAULT, AND STALKING

Sexual misconduct against any member of the Nebraska Indian Community College will be turned over to local authorities for investigation since NICC does not have any on campus housing or will be handled through the NICC grievance policy as stated below. Reporting persons are the Administrative Personnel listed in the Introduction and the Title IX Coordinator, HR Manager as previously stated. All NICC Staff were responsible for completing Clery Act, VAWA, and Title IX basic training in 2019. 10 employees completed the Campus Security Authority (CSA) Training.

ASSISTANCE FOLLOWING AN INCIDENT OF SEXUAL ASSAULT

- Immediate Assistance:
Persons who have complaints of sexual harassment may file their complaints with the Title IX Coordinator:

Title IX Coordinator	Phone	Email	Location
Anthony Warrior	402-241-5943	SanAWarrior@thenicc.edu	Santee Campus

Victims of sexual violence should get to a place of safety and call 911 or their nearest police department:

<i>Campus</i>	<i>Police Contacts</i>
Macy, NE	<ul style="list-style-type: none"> • Omaha Nation Police Department 402-837-5906 • Thurston County Sheriff's Office 402-385-3018 • Walthill Police Department 402-846-5685 • Winnebago Police Department/BIA 402-878-2245
Santee, NE	<ul style="list-style-type: none"> • Santee Police Department 402-857-2527 • Knox County Sheriff's Office 402-288-4261 • Niobrara Police Department 402-857-2772 • Yankton (SD) City Police Department 605-668-5210
South Sioux City, NE	<ul style="list-style-type: none"> • South Sioux City (NE) Police Department 402-494-7512 • Dakota County Sheriff's Office 402-987-2188 • Dakota City (NE) Police Department 402-987-2182 • Vermillion (SD) Police Department 605-677-7070 • Sioux City (IA) Police Department 712-279-6440 • North Sioux City (SD) Police Department 605-232-4301
Pawnee, OK	<ul style="list-style-type: none"> • Pawnee County Sheriff's Office 918-762-2565 • Pawnee Tribal Nation Police Department 918-762-3013 • Pawnee City Police 918-762-3166

**Note* These contacts are also helpful for witnesses.*

Obtain necessary medical treatment; time is a critical factor for evidence collection and preservation. An assault should be reported directly to a law enforcement officer, and college officials will aid in facilitating this process. Filing a police report will not obligate the complainant to prosecute, nor will it subject the reporting party to scrutiny or judgmental opinions from officers. Filing a police report will ensure that a complainant of sexual violence receives the necessary medical treatment and tests, at no expense to the complainant to the extent provided for by Nebraska and Oklahoma law, and provide the opportunity for collection of evidence helpful in prosecution, which cannot be obtained later.

- **Ongoing Assistance:**
In order to ensure the safety and well-being of the complainant, NICC may take interim measures such as changing work schedules, academic schedules, addressing transportation issues, withdraw from/retake a class without penalty, and access academic support (e.g., tutoring), leaves of absence, campus escort services, or similar measures. In addition, while an investigation is pending NICC may initiate a “no contact order” between the parties that carries a sanction of expulsion if violated.

Morningstar Counseling (<https://www.morningstar-counseling.com/>) provides free counseling services to all NICC students. They have offices in the following locations:

Macy, NE (on campus)	Santee, NE	Walthill, NE
1111 Hwy 75	110 Visiting Eagle St.	104 S. Cosetello

Telehealth and online services are available for all NICC students and employees free of charge. Contact Dr. Belinda Hinojos at 402-417-3884 or dr.hinojos@morningstar-counseling.com to set up an appointment, or use their website: (<https://www.morningstar-counseling.com/schedule-appointment>).

Campus	Local Support Services
---------------	-------------------------------

Macy, NE

ONCRT- Walthill
www.omahanationcrt.org
312 Main St. Fl. 2
Walthill, NE
402-846-5280

Winnebago Tribe Domestic Violence Program
Michelle Anderson, Director, Michelle.Andersen@winnebagotribe.com

Omaha Tribe Domestic Violence Program
John Penn, Director of Omaha Tribe Family Services, john.penn@theomahatribe.com

H.E.A.R.T program DTSU (SAFE HOUSE)

Santee, NE

Ponca Tribe Domestic Violence Program
- Andrea Rodriguez, Director, arodriguez@poncatribene.org

Santee Sioux Nation Domestic Violence Program
- Dana Yunker, Director, yunkerdana0909@gmail.com
- Danielle LaPointe, Director of Santee's Social Services Program (the domestic violence program is under this department, danlapointe7@gmail.com)

Ponca Tribe Domestic Violence Resources 712-258-0500

<https://www.poncatribene.org/services/domestic-violence/>

South Sioux City, NE

Council on Sexual Assault for Woodbury County 712-635-5244
- Contact: Lisa M. Greely

Bright Horizons, <https://brighthorizonsne.org/>
Haven House, <https://havenhousefsc.com/>
CSADV, safeplacesiouxland.org

Council on Sexual Assault and Domestic Violence
Legal Aid of Nebraska- Native American Program
- Contact: Kirby Williams (Domestic Violence Outreach Coordinator)
- 209 S. 19th Street, Suite 200 Omaha, NE 68102
- 402-348-1069 ext. 269 or 888-991-9921 ext. 269

Pawnee, OK

Pawnee Indian Health Service Behavioral Services (918)762-6604

Pawnee Nation Ti-Hirasa Domestic Violence Program- 918-399-3310

CREOKS Behavioral Health Services 540 Illinois St Pawnee, OK 74058 (918) 762-1045

<i>By State</i>	
Nebraska	Oklahoma
<ul style="list-style-type: none"> Nebraska Coalition to End Sexual and Domestic Violence 402-476-6256 www.nebraskacoalition.org 	<ul style="list-style-type: none"> Oklahoma Safeline - 1-800-522-7233 (SAFE) Oklahoma Safeline - Oklahoma City Metro Area - 405-522-7233 (SAFE) Oklahoma Coalition Against Domestic Violence/Sexual Assault 405-524-0700 (M-F/9-5)

<i>National Resources</i>
<ul style="list-style-type: none"> National Domestic Violence Hotline - 1-800-799-7233 (SAFE) Rape, Abuse & Incest National Network Hotline - 1-800-656-4673 (HOPE) Communication Services for the Deaf (TTY) - 1-800-252-1017 (TTY) Communication Services for the Deaf (Voice) - 1-866-845-7445 (Voice) Strong Hearts Native Helpline 1-844-7NATIVE (762-8483) Love is Respect (call or text) 1-866-331-9474

DISCIPLINE

Students are to maintain orderly conduct that is consistent with an educational environment. An instructor may remove a student from the classroom for behavior that violates the right of his peers. The violation is then reported to the Academic Dean for review and action. Discipline is the responsibility of the Academic Dean who has the authority to act on any violation and take whatever action is deemed appropriate. The Academic Dean will review all complaints and may dismiss the allegations, make an administrative disposition, or conduct a formal hearing in conjunction with the grievance committee. Possible disciplinary actions can be found in the Student Rights section of this catalog. Students dissatisfied with findings of the Academic Dean should follow the Grievance Procedure.

DISCRIMINATION

Fair, prompt, and impartial consideration of complaints involving discrimination on the grounds of race, religion, sex, age, national origin, Tribal affiliation, or disability will be provided to students and staff without fear of reprisal. Full cooperation will be provided to an individual who files a complaint of discrimination. Matters of discrimination can be directed to the Human Resources Manager or Academic Dean.

DEFINITIONS

Word(s)	Definition
College, NICC	Means Nebraska Indian Community College
Student	Means a student actively enrolled in classes at NICC
Faculty member	Means any person assigned by the College to conduct classroom activities
Administrator or Administration	Means a person in the Executive level of NICC
Bomb	Means a danger of an explosive or incendiary device.
Person in Charge	The person who is in charge of a campus site according to the organizational structure or administrative decision, that is an employee of NICC.
Law Enforcement Agencies	Agencies that handle criminal matters. These agencies are defined as city, county, tribal, state, and federal agencies.

College premises	Includes all land, buildings, facilities and other property in the ownership of NICC including adjacent streets and sidewalks.
Consent	Effective consent is informed, freely and actively given, in mutually understandable words or actions, by each participant, which indicates a willingness to participate in mutually agreed upon sexual activity
Incapacitated	Incapacitated means being in a state where a person lacks the mental or physical capacity to appreciate the fact that they are in a sexual situation
Domestic Violence	felony or misdemeanor crimes of violence committed by a current or former spouse or intimate partner of the victim
Dating Violence	violence by a person who has been in a romantic or intimate relationship with the victim. Whether there was such relationship will be gauged by its length, type, and frequency of interaction.
Stalking & Cyberstalking	Sexual conduct directed at a specific person that would cause a reasonable person to fear for their individual safety or the safety of others; or to suffer substantial emotional distress.
Sexual Assault	Any nonconsensual sexual act proscribed by federal, tribal, or state law, including when the victim lacks capacity to consent. This definition will include but not limited to: rape, attempted sexual assault, threats of sexual violence either of the same or opposite gender.
Sexual harassment	Means unwelcome, gender-based verbal or physical conduct that is sufficiently severe, persistent, or pervasive that it unreasonably interferes with, denies, or limits someone's ability to participate or benefit from programs.
Sexual intimidation or exploitation	Means non-consensual or abusive sexual advantage of another for his/her own advantage or benefit.
Sexual Misconduct	Includes Sexual harassment and sexual intimidation or exploitation as defined by NICC.
Complaint	Means a written accusation that has been filed with a person-in-charge.
Natural Disaster	A natural disaster is defined as a tornado (see definition), earthquake (see definition), flood (see definition), thunderstorm (see definition), lightning strike (see definition)
Tornado	A rotating column of air ranging in width from a few yards to more than a mile and whirling at destructively high speeds, usually accompanied by a funnel-shaped downward extension of a cumulonimbus cloud.
Earthquake	A sudden movement of the earth's crust caused by the release of stress accumulated along geologic faults or by volcanic activity.
Flood	An overflowing of water onto land that is normally dry.
Thunderstorm	A transient, sometimes violent storm of thunder and lightning, often accompanied by rain and sometimes hail.
Lightning Strike	An abrupt, discontinuous natural electric discharge in the atmosphere.
Blizzard	A violent snowstorm with winds blowing at a minimum speed of 35 miles (56 kilometers) per hour and visibility of less than one-quarter mile (400 meters) for three hours.
Riot	A wild or turbulent disturbance created by a large number of people.
Word(s)	Clery Crimes

Criminal Homicide	See FSA Regulations and National Incident-Based Reporting System User Manual
Robbery	See FSA Regulations and National Incident-Based Reporting System User Manual
Burglary	See FSA Regulations and National Incident-Based Reporting System User Manual
Arson	See FSA Regulations and National Incident-Based Reporting System User Manual
Rape	See FSA Regulations and National Incident-Based Reporting System User Manual
Aggravated Assault	See FSA Regulations and National Incident-Based Reporting System User Manual
Motor Vehicle Theft	See FSA Regulations and National Incident-Based Reporting System User Manual
Drug Law Violations	See FSA Regulations and National Incident-Based Reporting System User Manual
Illegal Weapons Possession	See FSA Regulations and National Incident-Based Reporting System User Manual
Liquor Law Violations	See FSA Regulations and National Incident-Based Reporting System User Manual
Fondling	See FSA Regulations and National Incident-Based Reporting System User Manual
Incest	See FSA Regulations and National Incident-Based Reporting System User Manual
Statutory Rape	See FSA Regulations and National Incident-Based Reporting System User Manual
All Hate Crimes	See FSA Regulations and Uniform Crime Reporting Hate Crime Data Collections Guidelines and Training Manual
Domestic Violence	See FSA Regulations and Violence Against Women Act of 1994
Dating Violence	See FSA Regulations and Violence Against Women Act of 1994
Stalking	See FSA Regulations and Violence Against Women Act of 1994
Sexual Assault	See FSA Regulations and Violence Against Women Act of 1994

PROCEDURES AND POLICIES OF NICC

Students filing Complaints, Question or Concerns can contact the Human Resources, Academic Dean, or Dean of Student Services at 844-440-6422 or 402-936-1007. The representative will explain and discuss your right to file a criminal complaint (sexual assault and violence); the NICC Complaint process will follow the Grievance Policy as listed in the college's catalog and at the end of this report. Students also have the right to report any criminal event to the police.

<i>Campus</i>	<i>Police Contacts</i>
Macy, NE	<ul style="list-style-type: none"> • Omaha Nation Police Department 402-837-5906 • Thurston County Sheriff's Office 402-385-3018 • Walthill Police Department 402-846-5685 • Winnebago Police Department/BIA 402-878-2245
Santee, NE	<ul style="list-style-type: none"> • Santee Police Department 402-857-2527 • Knox County Sheriff's Office 402-288-4261 • Niobrara Police Department 402-857-2772 • Yankton (SD) City Police Department 605-668-5210

South Sioux City, NE	<ul style="list-style-type: none"> • South Sioux City (NE) Police Department 402-494-7512 • Dakota County Sheriff's Office 402-987-2188 • Dakota City (NE) Police Department 402-987-2182 • Vermillion (SD) Police Department 605-677-7070 • Sioux City (IA) Police Department 712-279-6440 • North Sioux City (SD) Police Department 605-232-4301
Pawnee, OK	<ul style="list-style-type: none"> • Pawnee County Sheriff's Office 918-762-2565 • Pawnee Tribal Nation Police Department 918-762-3013 • Pawnee City Police 918-762-3166

In an emergency, call 911 immediately and preserve any evidence necessary for police reporting.

STUDENT RIGHTS

The following rights of the student are recognized as among those that the College has the responsibility to foster and protect.

- The right to pursue educational, recreational, social, religious, and cultural activities.
- The right to maintenance of a campus environment characterized by safety and good order.
- The right to organize, join, and maintain membership in associations to promote lawful interests the student holds in common with other students, subject to reasonable and non-discriminatory College regulations.
- The right to appropriate available services of the faculty, administrative offices, and support services of the College.
- The right to report grievances or complaints to college administration or staff, local police, Federal agencies, or Tribal authorities.
- The right to fair and impartial evaluation of the student's academic work.
- The right to have complete and accurate records maintained by the College of the student's academic performance and the right to review them.
- The right, through representatives of the student's choice, to voice his or her opinion and to participate in the formulation of regulations affecting student affairs.
- The right to have the College maintain and protect the student's academic conduct, financial information, and counseling records, as required by the Family Educational Rights and Privacy Act (FERPA). A copy of the FERPA Act may be requested through the Admissions/Advising/Records Office and can be viewed under Consumer Information at www.thenicc.edu. The student has the right to provide a written request for the disclosure of their records. If the student requests a copy of the records, a charge of \$.10 per page will be assessed to the student's account. See also Release of student information for more information.

STUDENT RESPONSIBILITIES

Students are bound by all rules, regulations, and processes of the College Catalog effective during their term of enrollment. **Students should read the NICC College Catalog carefully, as it is their primary source of information on requirements and regulations.** The College will not waive a regulation because a student pleads ignorance of it. This College Catalog should be retained as a permanent record for reference, transfer, and graduation information.

- Students are responsible for their own learning and development by becoming active learners through attending class, completing class and laboratory assignments, and preparing in advance for their scheduled classes.
- The final responsibility for planning courses, meeting requirements, and observing regulations lies with the student. It is the students' responsibility to know and observe all policies and procedures for their programs.
- Students should assume responsibility for their own verbal and non-verbal communications, writings, and behavior.
- Students shall maintain confidentiality when appropriate and indicated.
- Students are responsible for appropriate use of services provided by the College.

- Students are responsible to uphold the College's academic honesty policy.
- Nebraska Indian Community College students are expected to abide by local, tribal, and applicable state and federal laws, as well as college regulations.

Members of the student body will engage in reasonable behavior that promotes unity and ensures quality education to be the final result. The following are among the responsibilities recognized as incumbent upon every student:

STUDENT CODE OF CONDUCT

NICC expects its students to abide by local, tribal, state, federal laws, and college regulations. The college will not tolerate unlawful behavior, which infringes upon or denies the rights and freedoms of others, or disruptive acts, which affect either the academic or the civil operation of the college. NICC standards of conduct clearly prohibit the unlawful possession, use, or distribution of illicit drugs and the possession, use or sale of alcohol by students on its property or as part of any of its officially recognized activities. If a student becomes disruptive and refuses to leave when asked, law enforcement officials will be contacted. Any student who fails to observe these laws and regulations may be denied the services of the college through due process.

INCIDENTS REPORT

Students who are observed violating college policies and regulations by a college employee will receive an incident report. The student will be told verbally at the time of the observed violation that an Incident Report will be issued. The report will be signed by the witnessing college employee. The signed Incident Report will be turned in to the Academic Dean within one business day of the alleged violation for review. The Academic Dean will take actions deemed appropriate to the incident, which may include academic probation or suspension. These incident reports will be kept in the student's permanent file.

GRIEVANCES

Nebraska Indian Community College students, staff, faculty, and administration have certain rights that must be respected. If any party feels that their rights have been violated, a process has been established by which the alleged wrongful act be addressed.

GRIEVANCE PROCEDURE

Informal Resolution: Any dispute, disagreement regarding a student's rights, sexual discrimination, or decisions made regarding student's conduct is eligible for the grievance procedure. Any academic concerns need to follow the academic appeals process as later described in this catalog. Often these disputes are simple misunderstandings that can be cleared up with an informal meeting. If any party involved is not satisfied with the resolution reached at this meeting or feels too uncomfortable to meet with the other party, a grievance form should be filed.

Formal Grievance Protocol:

1. **Grievance Action:** Every feasible informal means of resolution should be attempted prior to the filing of a grievance form. The grievance form can be acquired from the Advisor, Academic Dean or online at www.thenicc.edu under "Student" tab and "student forms" and should be submitted to the Academic Dean.
2. **Academic Dean Review:** The completed grievance form should be filed with the Academic Dean within ten (10) calendar days after meeting with the instructor or Academic Dean in the informal resolution step. The appeal must include the following items:
 - Name, address, email, and phone number of the person filing the grievance.
 - Explanation of the efforts the student has made to resolve the appeal informally.
 - Nature of the grievance in full detail.
 - Place, date, and time of alleged incident.
 - Name of the person(s) accused of the violation.
 - Requested remedy.
 - Any background information or documentation the student filing the grievances believes to be relevant.

The Academic Dean will provide written response to the applicant within ten (10) working days of the date of submission. If the Academic Dean is unable to obtain a resolution of the grievance, it proceeds to step 3.
3. **Grievance Committee Review:** Within ten (10) working days of the Academic Dean's response, a grievance committee meeting will be called. The grievance committee will include minimally, an administrator, a

faculty member, and a Student Senate representative, all of whom are not reflected as a party of the grievance. The Academic Dean will attend to present the findings. The Committee will meet and review the appeal and all documentation at this meeting with both parties of the grievance and their advocates. The committee may also meet privately to discuss information presented. Written finding will be issued within three (3) working days of the Committee meeting. If any party remains dissatisfied with the resolution obtained by the committee they may proceed to the next step.

4. **President Review:** Within three (3) working days of receipt of the grievance committee’s findings, any party may request a review by the President. After reviewing the request and all documentation, the President will issue a decision within ten (10) working days of receipt of the request for appeal.

CAMPUS CRIME SURVEYS CERTIFICATION

Campus Safety and Security Survey Completion Certificate

The Campus Safety and Security data for
Nebraska Indian Community College
(181419)

were completed and locked on **September 29, 2022.**

<u>Campus Name (ID)</u>	<u>Date of Completion</u>
Macy Campus (181419001)	September 29, 2022
Santee Campus (181419003)	September 29, 2022
South Sioux City Campus (181419004)	September 29, 2022



Thank you for your participation in the 2022 data collection.

This certificate was prepared on **September 29, 2022**